



Saint-Petersburg
State University ITMO

Automata-based Algorithms Visualization Framework

Georgiy Korneev
kgeorgiy@rain.ifmo.ru

Computer Technology Department,
Saint-Petersburg State University of
Information Technology, Mechanics and Optics,
Russia



Saint-Petersburg
State University ITMO

What is visualizer?

max = 79



73 not greater than current maximum (79)

Control panel with buttons: <<, >>, Restart, Auto, <<, Delay: 1000, >>, ?, Random, Save/Load, <<, Elements: 5, >>



Saint-Petersburg
State University ITMO

Visualizers advantages

- Better algorithms understandability
- Dynamic content
- User can choose input data
- Forward and backward tracing
- Detailed comments



Saint-Petersburg
State University ITMO

Visualizer requirements

- Interface simplicity
- Show all algorithm stages and special cases
- Clear comments for all stages
- Hints for every visualizer element
- Big and small steps
- Automated execution



Saint-Petersburg
State University ITMO

Visualizers history in ITMO

- Sergey Stolyar
 - Initial stage (1998-1999)
- Matvey Kazakov
 - Transitional stage (1999-2000)
- Georgiy Korneev
 - Evolution stage (2000-2002)
 - Industrial stage (2002-2004)



Saint-Petersburg
State University ITMO

Initial stage

- First attempts
- Visualizers in Borland Delphi
- Handmade user interface
- Handmade visualizers logic

- Less than ten visualizers were made
- Very slow development
- Lots of errors



Saint-Petersburg
State University ITMO

Transitional stage

- Visualizers in Java (applets)
- Similar user interfaces
- First attempts in reversing

- About 15 visualizers
- Slow development
- Less errors



Saint-Petersburg
State University ITMO

Evolution stage

- Common user interfaces (BaseApplet library)
 - Common configuration
 - Template-based logic
 - All visualizers are reversible
-
- More than 50 visualizers
 - Fast GUI development
 - Difficulties in reversing



Saint-Petersburg
State University ITMO

Industrial stage

- Standard user interface
- Automated code generation
- Automated program reverse

- More than 200 visualizers
- Fast logic development
- Automated reverse
- Quick development



Saint-Petersburg
State University ITMO

Vizi visualization technology

- Visual representation library
- Logic definition language
- Visualizer programming methodology
- Standard project execution flow
- Documentation infrastructure

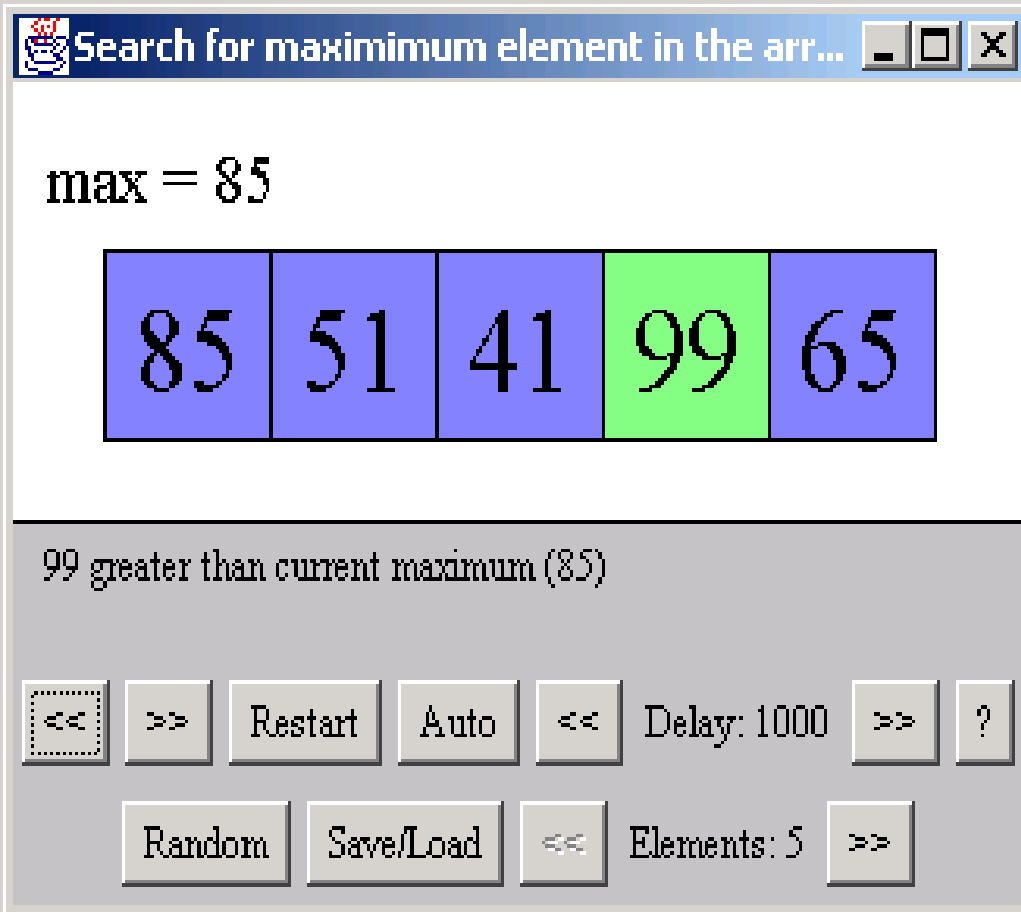
- Vizi visualization framework binds it together

Standard interface (1)

Drawing area

Comment area

Controls area



max = 85

85	51	41	99	65
----	----	----	----	----

99 greater than current maximum (85)

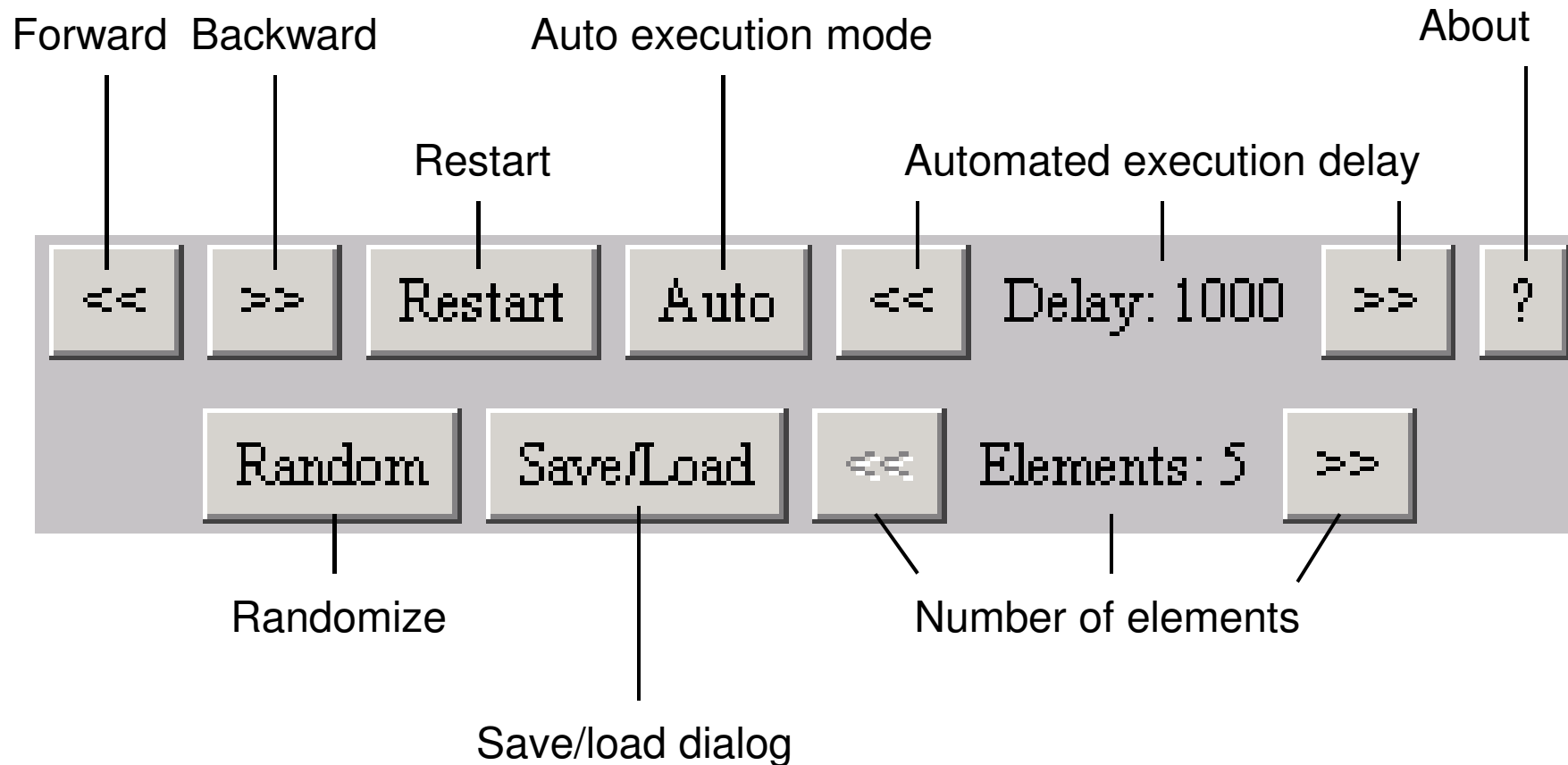
<< >> Restart Auto << Delay: 1000 >> ?

Random Save/Load << Elements: 5 >>



Saint-Petersburg
State University ITMO

Standard interface (2)





Saint-Petersburg
State University ITMO

Logic definition language

- XML-based
- Program-like
- Auto-commented
- Auto documentation generation



Saint-Petersburg
State University ITMO

Visualizer programming Methodology

- Based on Switch-technology
- Formal program transformation
- Automated source code generation
- Model-View-Controller paradigm



Saint-Petersburg
State University ITMO

Switch-technology in visualization

- Proposed by Anatoly Shalyto (1991)
- First application for visualizers
Matvey Kazakov (2002)
 - Implementation
 - Block diagrams
 - Automata transition diagram
 - Automata-based visualizer programming
- Visualization and reversing technology
Georgiy Korneev (2003)



Saint-Petersburg
State University ITMO

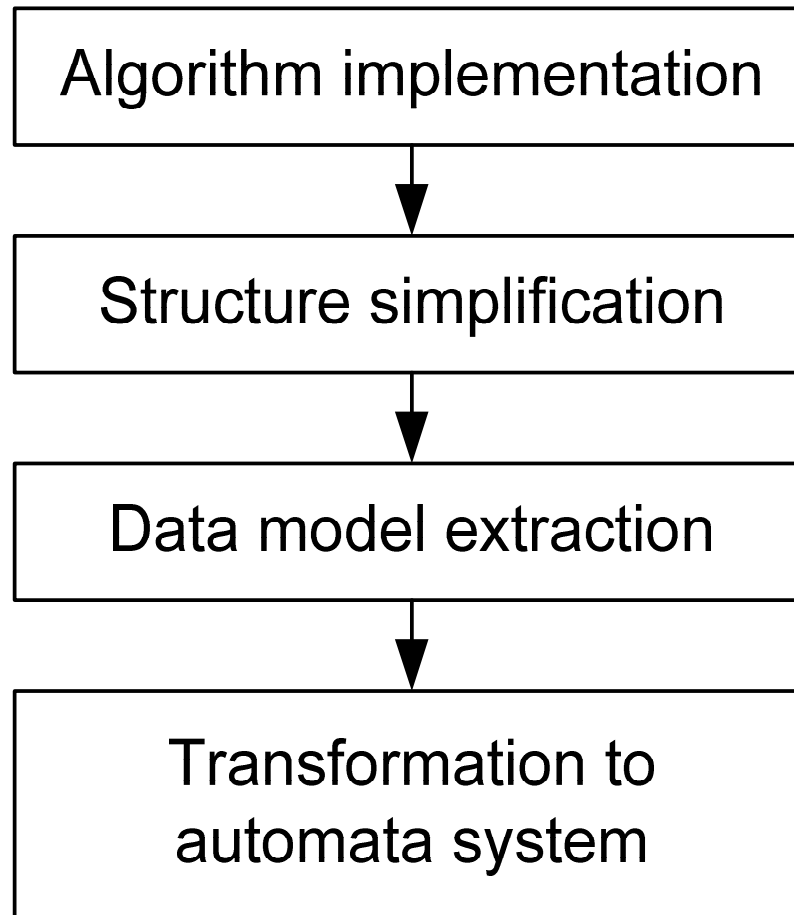
Switch-technology in Vizi

- Correlated automata systems
- Automata pair for each procedure
- Automata pair
 - Forward transition graph
 - Backward transition graph
 - Shared automata states



Saint-Petersburg
State University ITMO

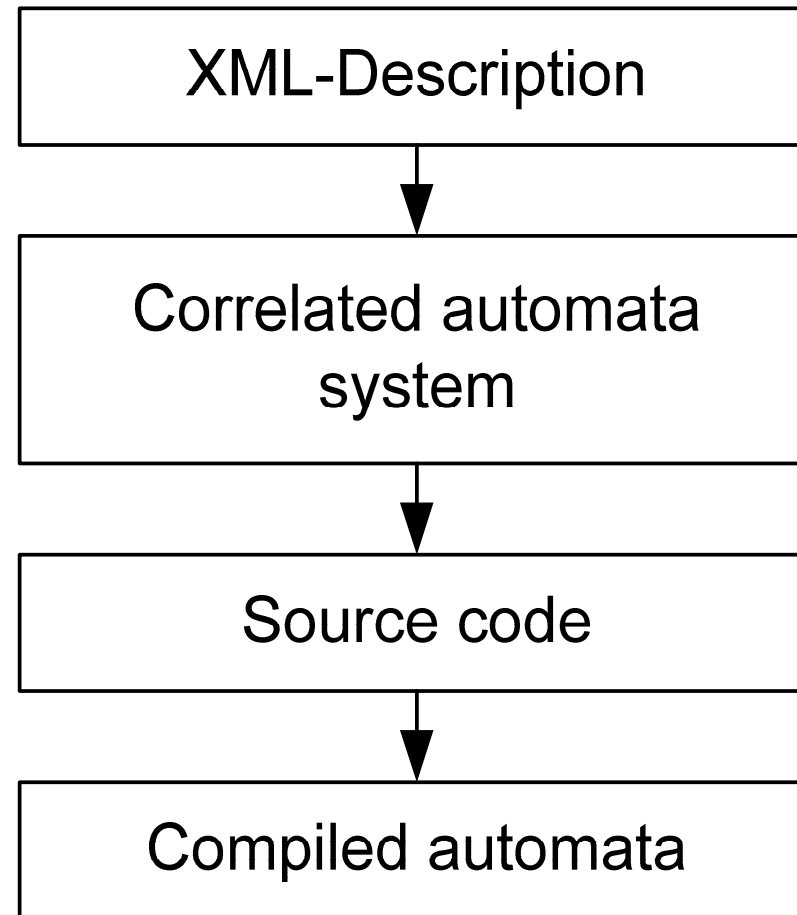
Formal program transformations





Saint-Petersburg
State University ITMO

Automated source code generation





Saint-Petersburg
State University ITMO

Model-View-Controller paradigm

- Model
 - Auto-generated correlated automata system
- View
 - User interface based on Vizi library
- Controller
 - Vizi library



Saint-Petersburg
State University ITMO

Algorithm reversing problem

- Backward tracing is very useful for education
- Repeatable forward-backward navigation
- How get one step back?



Saint-Petersburg
State University ITMO

Algorithm reversing problem solutions

- Per-step save/load technique
 - High memory requirements
- Program re-execution
 - Low execution speed
- Program reverse
 - Average memory requirements
 - High execution speed



Saint-Petersburg
State University ITMO

Program reversing difficulties

- Two versions of program
 - for forward tracing
 - for backward tracing
- Algorithm development for backward tracing
- Programs must be synchronized
- Complex modification
- Hard debugging



Saint-Petersburg
State University ITMO

Automated program reversing

- One version of program (XML-source)
- Simple modification
- One-way debugging



Saint-Petersburg
State University ITMO

Project execution flow

- Algorithm implementation
- Program structure simplification
- Data model extraction
- Transformation to correlated automata system
- Code generation



Saint-Petersburg
State University ITMO

Algorithm implementation

- Algorithm is implemented using structural language
- Implementation source code is an input for other stages



Saint-Petersburg
State University ITMO

Program structure simplification

- Most of programming languages are too complicated for automated transformations
- Program should use only simple programming structures
- Structuring theorem
- Formal structure simplification for Java



Saint-Petersburg
State University ITMO

Allowed structures

- Statements sequence
- Assignment statement
- Short conditional statement
- Full conditional statement
- “While” loop
- Procedure call



Saint-Petersburg
State University ITMO

Data model extraction

- Data model contains all variables
- Data model fully represents algorithm state
- All data flows going through data model

- Formal data model extraction



Saint-Petersburg
State University ITMO

Transformation into correlated automata system

- Correlated automata systems
- Pairwise automatas
- Formal and automated program transformation



Saint-Petersburg
State University ITMO

Project documentation (1)

- Annotation
 - Short project description
- Introduction
 - Brief algorithm description
 - Algorithm applications
 - Usage examples
- Chapter 1. Literature analysis
 - References and comments



Saint-Petersburg
State University ITMO

Project documentation (2)

- Chapter 2. Algorithm description
 - Complete algorithm descriptions
 - Special cases analysis
- Chapter 3. Algorithm implementation
 - Implementation comments
 - Decision ground
- Chapter 4. Implementation simplification
 - Simplified implementation



Saint-Petersburg
State University ITMO

Project documentation (3)

- Chapter 5. Data model definition
 - Descriptions of data model variables
- Chapter 6. “Interesting” stages definition
 - Implementation is divided into “interesting” stages
 - Comments for “interesting” stages
- Chapter 7. User Interface Description
 - Pictures for each “interesting” stage
 - Controls descriptions



Saint-Petersburg
State University ITMO

Project documentation (4)

- Chapter 8. Configuration Description
 - Complete configuration description
 - Initial configuration
- Conclusions
 - Visualizer properties
- References



Saint-Petersburg
State University ITMO

Project documentation (5)

- Appendixes
 - Algorithm Implementations Source Code
 - Transformed Implementation
 - Visualizer XML-description
 - Generated Source Codes
 - User Interfaces Source Codes



Saint-Petersburg
State University ITMO

Simple algorithm example

“FindMaximum” algorithm

Search for maximum element in the array of natural numbers (example)

max = 39

21	27	10	39	8	20	65
----	----	----	----	---	----	----

Updating current maximum

<< >> Restart Auto << Delay: 1000 >> ?

Random Save/Load << Elements: 7 >>



Saint-Petersburg
State University ITMO

FindMaximum Algorithm implementation

```
int max = 0;
for (int i = 0; i < a.length; i++) {
    if (max < a[i]) {
        max = a[i];
    }
}
```



Saint-Petersburg
State University ITMO

FindMaximum

Simplified implementation

```
int max = 0;
int i = 0;
while (i < a.length) {
    if (max < a[i]) {
        max = a[i];
    }
    i++;
}
```



Saint-Petersburg
State University ITMO

FindMaximum Data model

```
public final static class Data {  
    public int max;  
    public int a[];  
    public int Main_i;  
}
```



Saint-Petersburg
State University ITMO

FindMaximum

Transformed implementation

```
d.max = 0;  
d.i = 0;  
while (d.i < d.a.length) {  
    if (d.max < d.a[d.i]) {  
        d.max = d.a[d.i];  
    }  
    d.i++;  
}
```

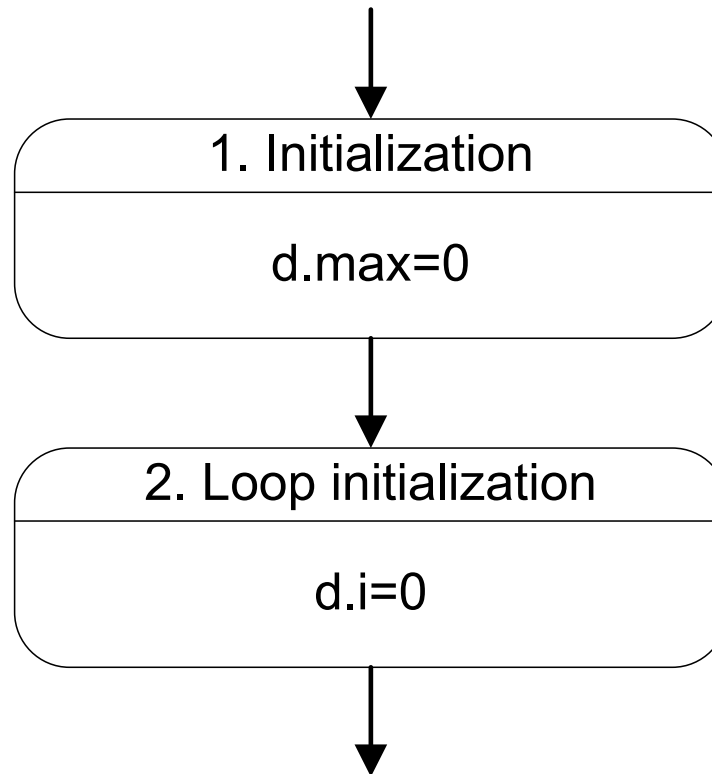


Saint-Petersburg
State University ITMO

FindMaximum

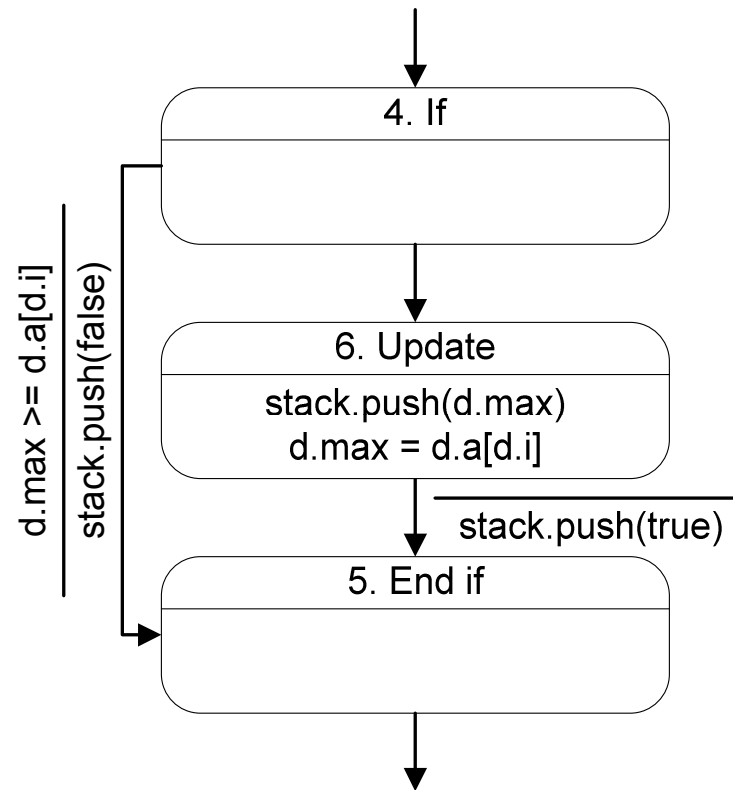
Transformation to automata (1)

- Initialization

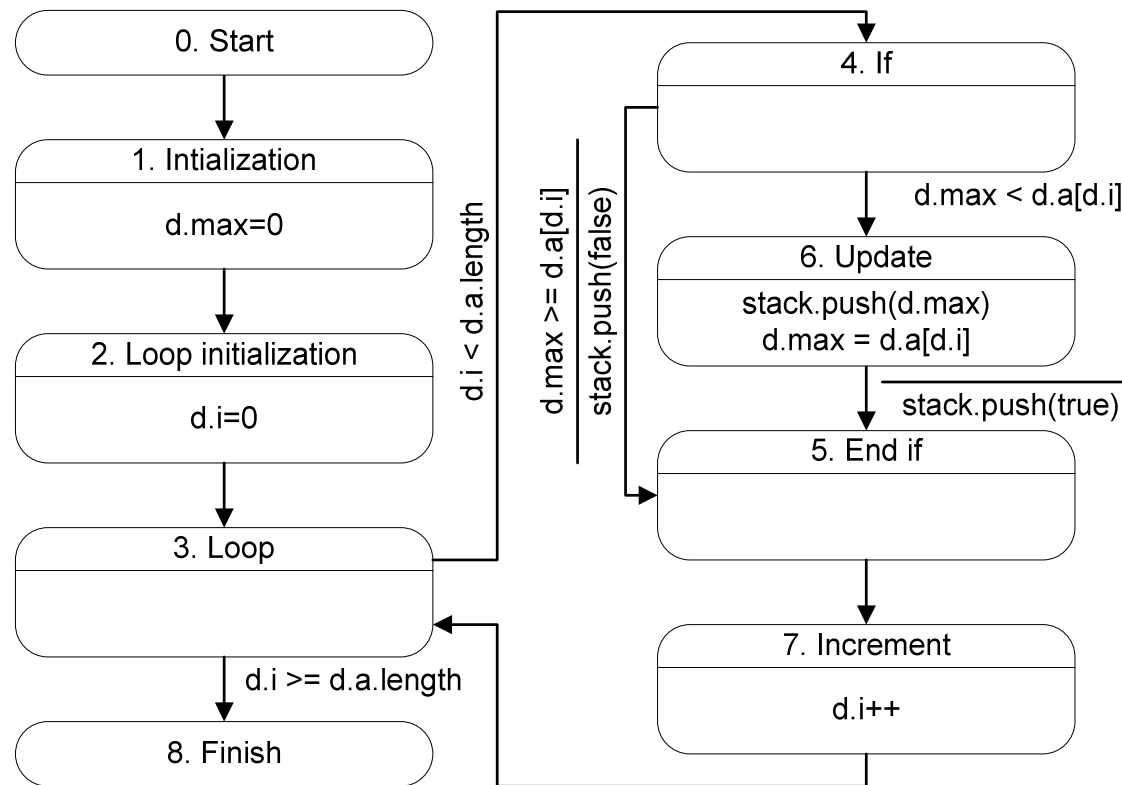




- If statement

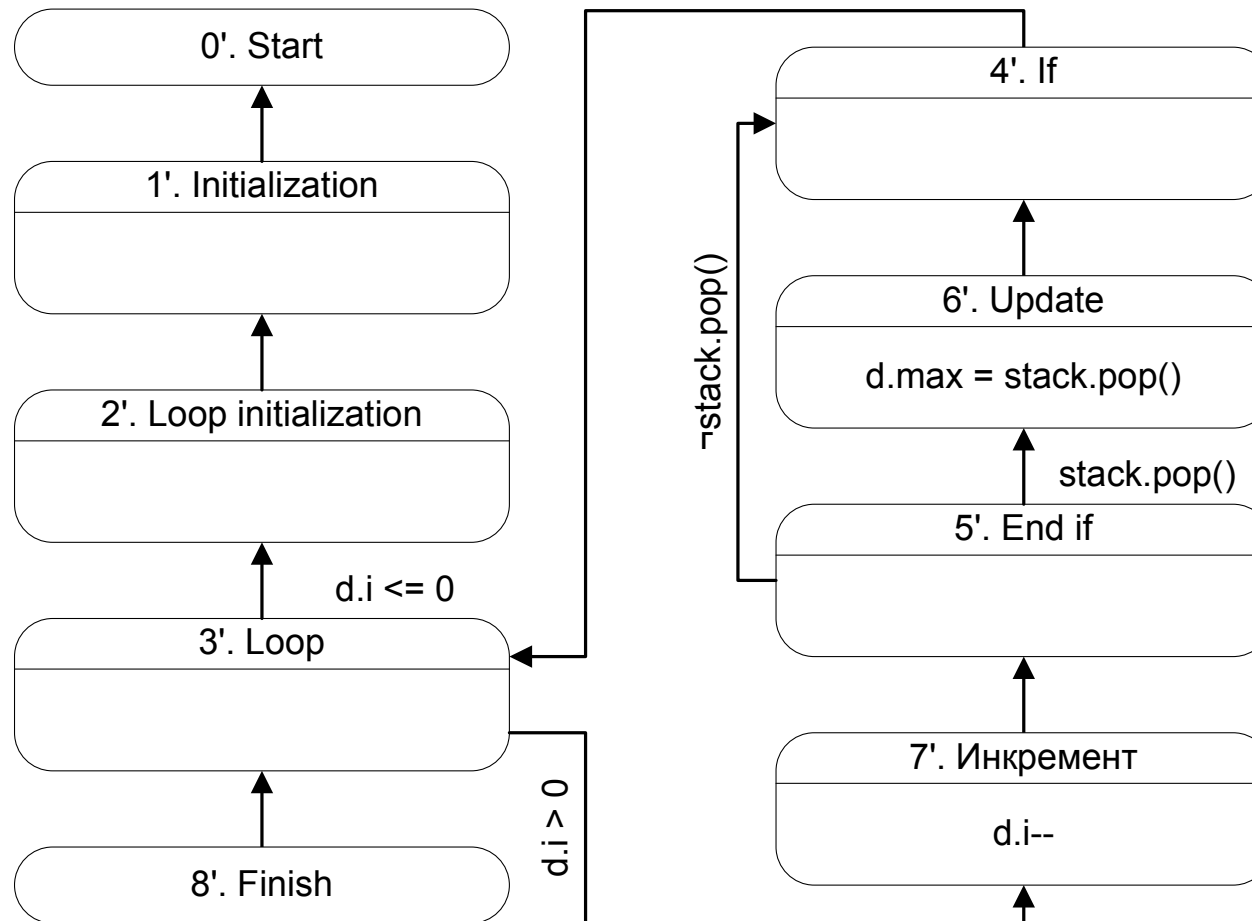


- Full automata





FindMaximum Reversed automata





Saint-Petersburg
State University ITMO

FindMaximum XML-representation

```
<step>@max @= 0;</step>  
<step>@i @= 0;</step>  
<while test="@i < @a.length">  
  <if test="@max < @a[@i]">  
    <then>  
      <step>@max @= @a[@i];</step>  
    </then>  
  </if>  
  <step>@i @= @i + 1;</step>  
</while>
```



Saint-Petersburg
State University ITMO

FindMaximum

Generated sources extract

```
switch (state) {
    case 0: { // Start state
        state = 1; // Initialization
        break;
    } case 1: { // Initialization
        d.max = 0;
        state = 2; // Loop init
        break;
    } case 2: { // Loop init
        d.i = 0;
        state = 3; // Loop
        break;
    } case 3: { // Loop
        if (d.Main_i < d.a.length)
            state = 4; // If
        else state = END_STATE;
        break;
    }
}

case 4: { // if
    if (d.max < d.a[d.Main_i])
        state = 6; // Update
    else state = 5; // End if
    break;
} case 5: { // End if
    state = 7; // Increment
    break;
} case 6: { // Update
    d.max = d.a[d.Main_i];
    state = 5; // End if
    break;
} case 7: { // Increment
    d.Main_i++;
    state = 3; // Loop
    break;
}
```



Saint-Petersburg
State University ITMO

Find maximum Statistics

- Automata 2
- States 9
- Transitions 22

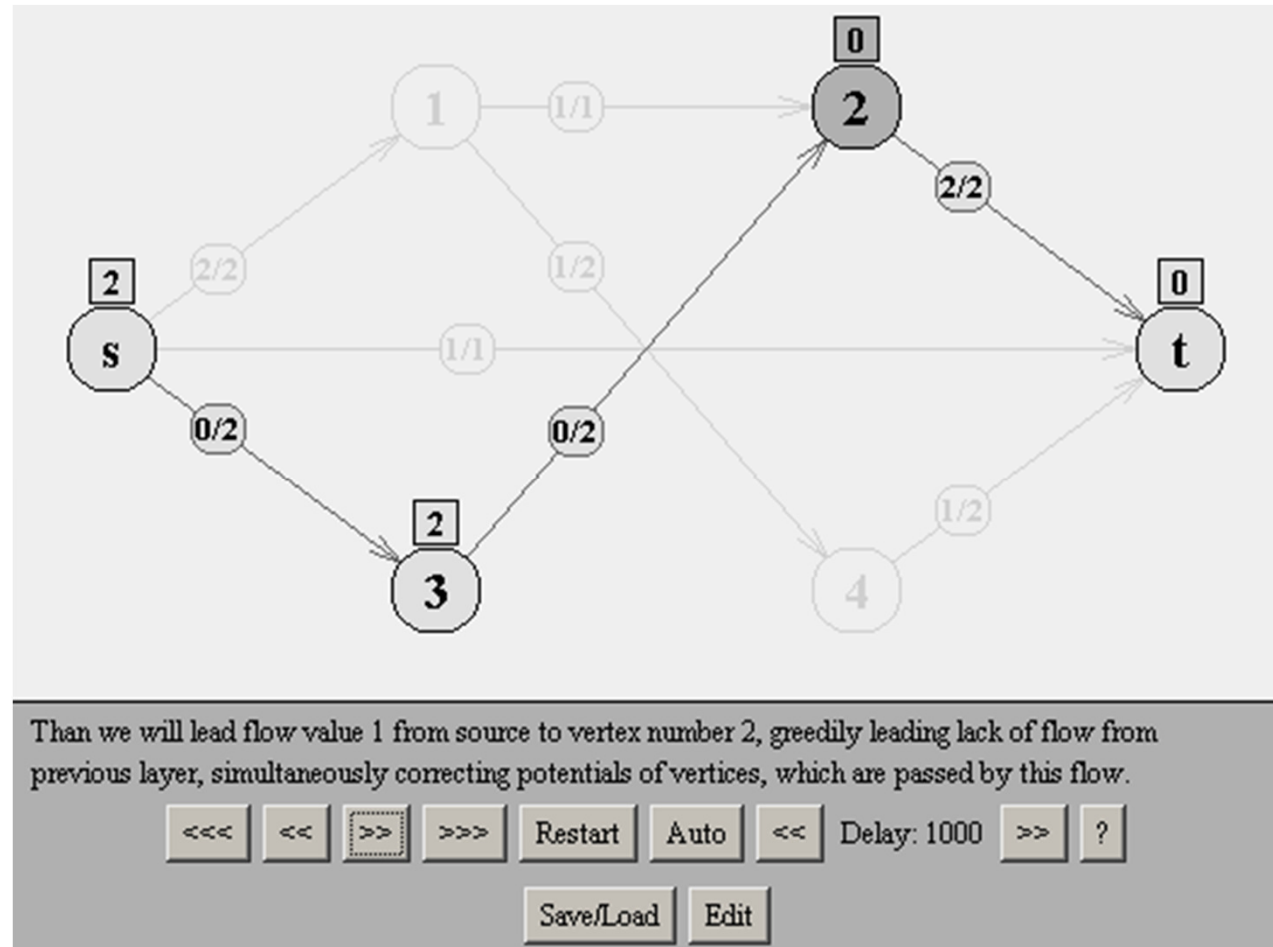
- XML-source (with comments) 87 lines
- Automata implementation 326 lines



Saint-Petersburg State University ITMO

Complex algorithm example

Malhotra,
Kumar,
Maheshwari
maximal
flow
algorithm





Saint-Petersburg
State University ITMO

Malhotra, Kumar, Maheshwari

Statistics

- Automata 18
- States 107
- Transitions 228

- XML-source (with comments) 516 lines
- Automata implementation 4069 lines



Saint-Petersburg
State University ITMO

More examples

- Dinic network flow algorithm
- Hopcroft-Karp Bipartite Matching algorithm
- Chu-Liu shortest arborescence of a directed graph
- Algorithms on 2-3 trees
- Bitonic salesman problem
- Ukkonen suffix tree construction algorithm
- Prim minimum spanning tree algorithm
- Simple strings and de Bruin cycles construction algorithms
- ...



Saint-Petersburg
State University ITMO

Links

- Vizi project homepage
 - <http://ctddev.ifmo.ru/vizi>
- Old visualizers examples
 - <http://ips.ifmo.ru:8888/ru/visualizers/>
- Visualizer-related switch-technology information
 - <http://is.ifmo.ru/?i0=vis>